

BOOT BARN®

#1601 Westminster, MD

20 Englar Road | Westminster, MD 21157

Project: 260050-01

Date: 02.02.2026

Index

- 01 Cover Page
- 02 Site Plan
- 03 North Elevation
- 04 West Elevation
- 05 A Sign Specifications
- 06 B Sign Specifications
- 07 C.1.C.2 Sign Specifications
- 08 D Tenant Panel

Ryan Drury
(916) 213.8223
ryan@pacificneon.com

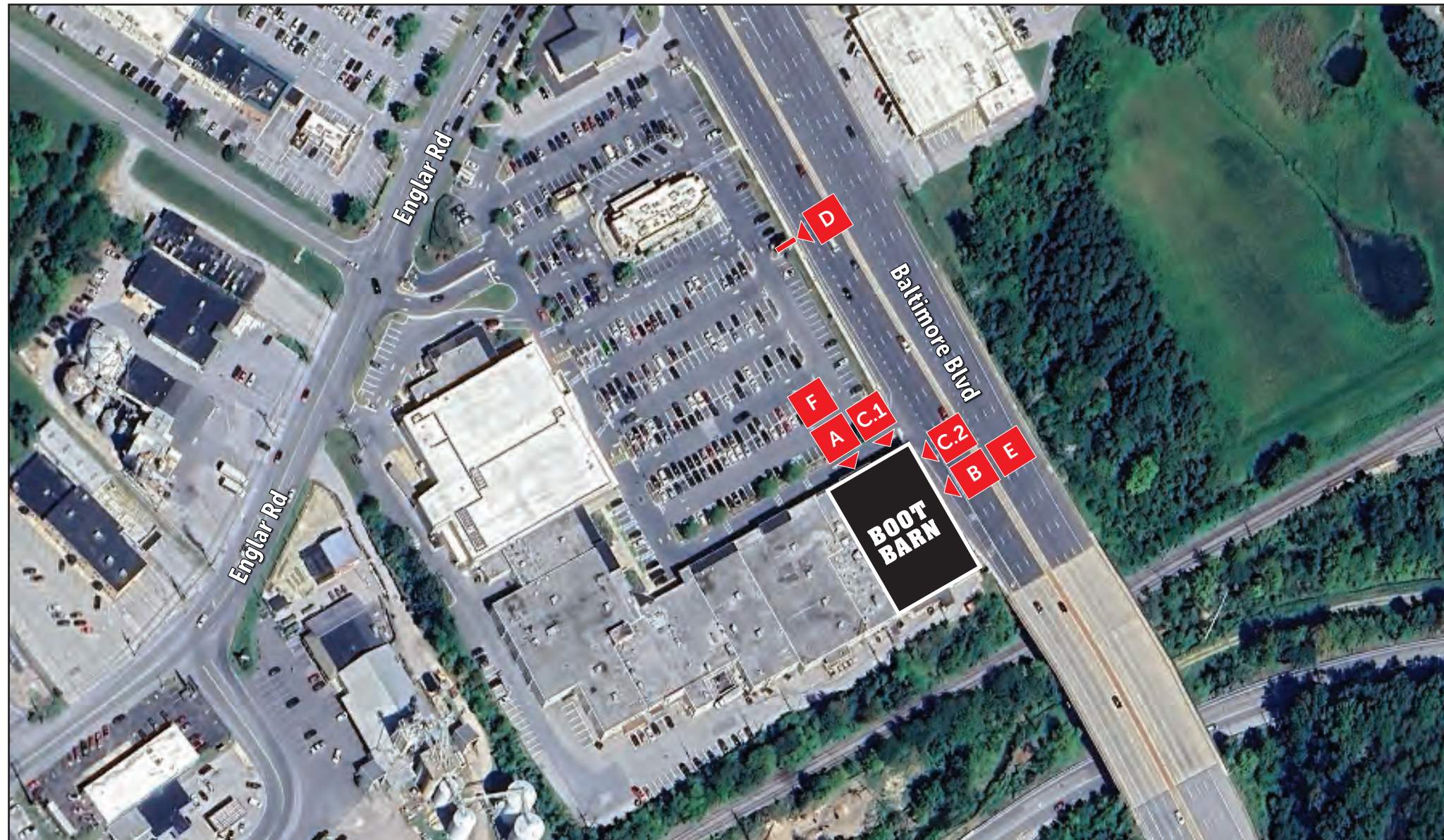
2939 Academy Way
Sacramento, California 95815

Tel: 916.927.0527 / 800.927.4762
e-mail: sales@pacificneon.com
www.pacificneon.com

**PACIFIC
NEON CO.**

SHEET NUMBER

01



U.L. Listed

Signs manufactured to U.L. specifications and bearing the U.L. Label(s) are intended for installation in accordance with the requirements of Article 600 of the National Electrical Code and/or other applicable local codes. This includes proper grounding and bonding of the sign.

Electrical Circuits

The customer is required to provide primary dedicated electrical circuit(s) with a separate ground connection to the electrical panel. LED Electronics require a separate dedicated 120V complete circuit (without sharing the neutral wire). A common ground connection to the electrical panel is acceptable.

California Title 24 Compliant

Color Reference

Actual color may vary from the on-screen representation or presentation material. To verify your color selections, please refer to a physical color chip, production sample, or Pantone® reference guides.

Copyright ©2026

All print and electronic art remains the sole, copyrighted property of Pacific Neon Company and is not to be distributed, copied, e-mailed, or transferred in any way without prior written release from Pacific Neon Company.

NORTH ELEVATION

A C.1 F

SIGN AREA CALCULATION 3:1

FRONTAGE 104.67 FT X 3 = 314 SQFT ALLOWED SIGN AREA

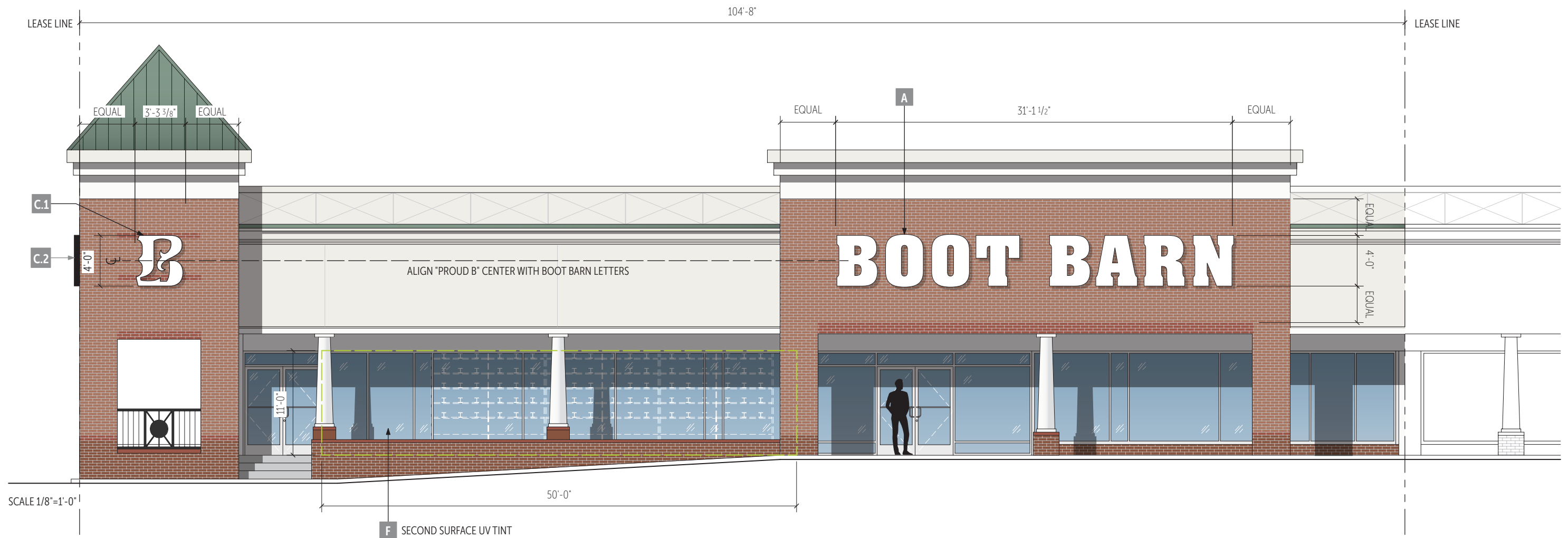
PROPOSED FRONT SIGN AREA 139.5 SQFT

PROPOSED SIDE SIGN AREA 139.5 SQFT

TOTAL PROPOSED SIGN AREA 279 SQFT



EXISTING ELEVATION



Ryan Drury
(916) 213.8223
ryan@pacificneon.com

2939 Academy Way
Sacramento, California 95815

Tel: 916.927.0527 / 800.927.4762
e-mail: sales@pacificneon.com
www.pacificneon.com

Project No:
260050-01

Project:
Boot Barn #1601 Westminster

Address:
20 Englar Road
Westminster MD 21157

Date:
01.15.2026

Revision 1: 01.21.2026
Revision 2:
Revision 3:

U.L. Listed

Signs manufactured to U.L. specifications and bearing the U.L. Label(s) are intended for installation in accordance with the requirements of Article 600 of the National Electrical Code and/or other applicable local codes. This includes proper grounding and bonding of the sign.

Electrical Circuits

The customer is required to provide primary dedicated electrical circuit(s) with a separate ground connection to the electrical panel. LED Electronics require a separate dedicated 120V complete circuit (without sharing the neutral wire). A common ground connection to the electrical panel is acceptable.

California Title 24 Compliant

Color Reference

Actual color may vary from the on-screen representation or presentation material. To verify your color selections, please refer to a physical color chip, production sample, or Pantone® reference guides.

Copyright ©2026

All print and electronic art remains the sole, copyrighted property of Pacific Neon Company and is not to be distributed, copied, e-mailed, or transferred in any way without prior written release from Pacific Neon Company.

SHEET NUMBER

03

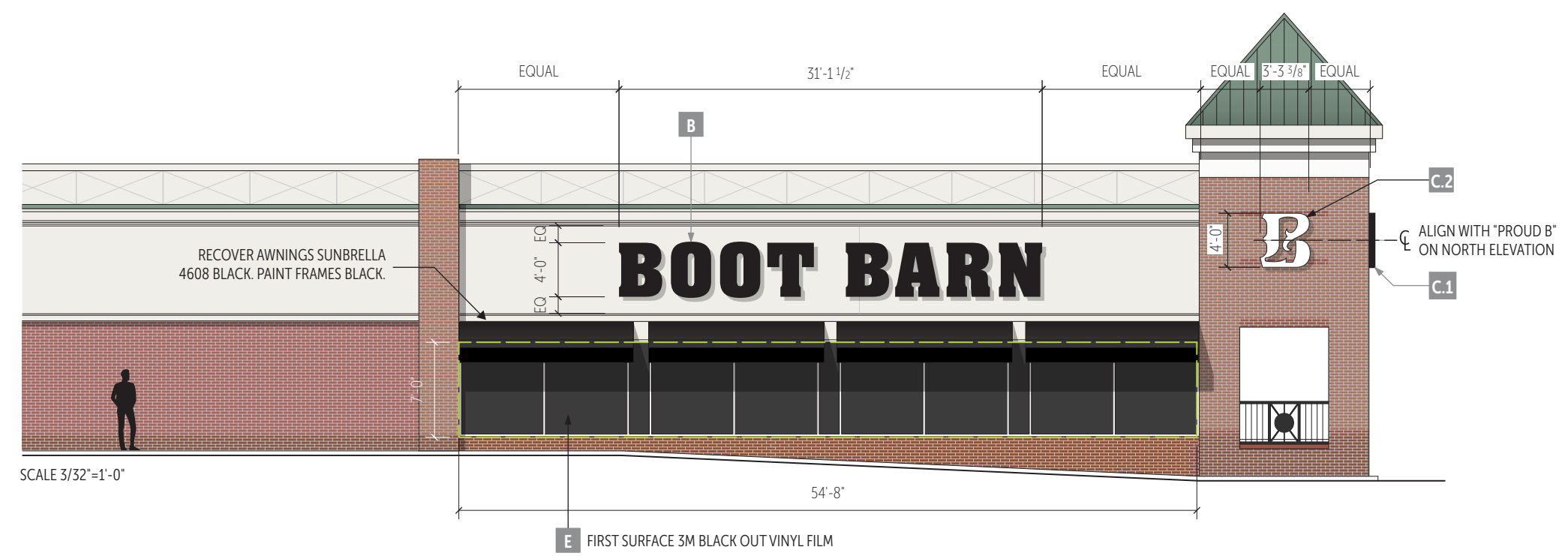
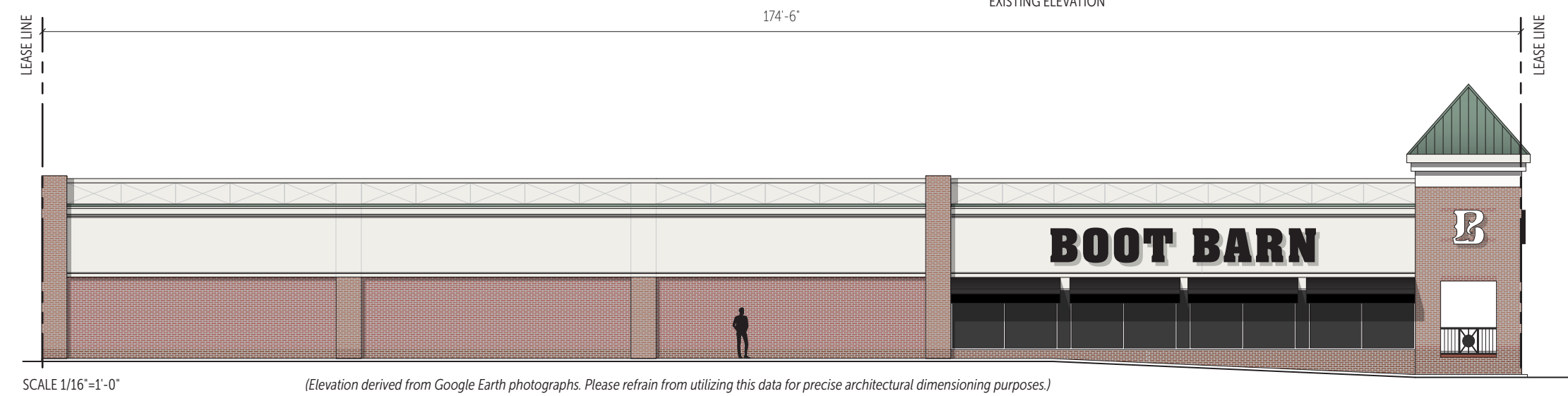
EAST ELEVATION

B **C.2** **E**

SIGN AREA CALCULATION 3:1	
FRONTAGE	104.67 FT X 3 = 314 SQFT ALLOWED SIGN AREA
PROPOSED FRONT SIGN AREA	139.5 SQFT
PROPOSED SIDE SIGN AREA	139.5 SQFT
TOTAL PROPOSED SIGN AREA	279 SQFT



EXISTING ELEVATION



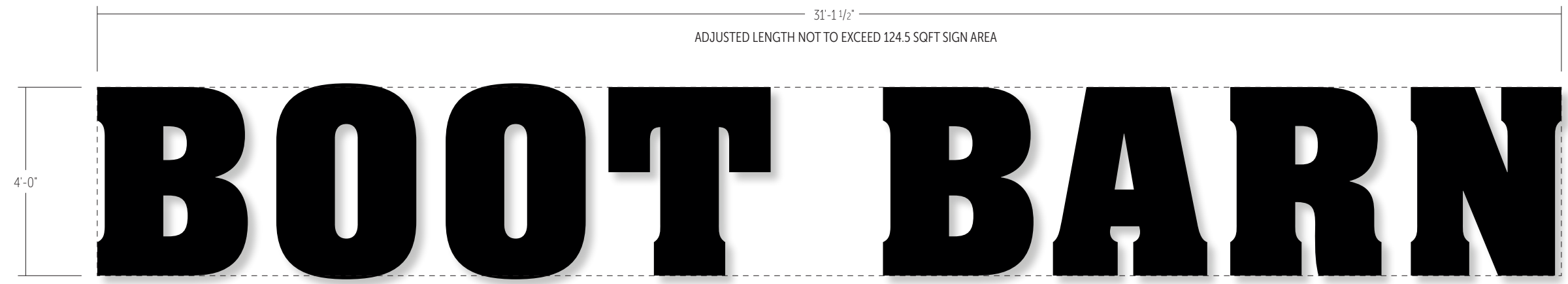
PACIFIC NEON CO.
 Ryan Drury
 (916) 213.8223
 ryan@pacificneon.com
 2939 Academy Way
 Sacramento, California 95815
 Tel: 916.927.0527 / 800.927.4762
 e-mail: sales@pacificneon.com
 www.pacificneon.com

Project No:
260050-01
 Project:
Boot Barn #1601 Westminster
 Address:
**20 Englar Road
 Westminster MD 21157**

Date:
01.15.2026
 Revision 1: **01.21.2026**
 Revision 2: **02.02.2026**
 Revision 3:

U.L. Listed
 Signs manufactured to U.L. specifications and bearing the U.L. Label(s) are intended for installation in accordance with the requirements of Article 600 of the National Electrical Code and/or other applicable local codes. This includes proper grounding and bonding of the sign.
Electrical Circuits
 The customer is required to provide primary dedicated electrical circuit(s) with a separate ground connection to the electrical panel. LED Electronics require a separate dedicated 120V complete circuit (without sharing the neutral wire). A common ground connection to the electrical panel is acceptable.

California Title 24 Compliant
Color Reference
 Actual color may vary from the on-screen representation or presentation material. To verify your color selections, please refer to a physical color chip, production sample, or Pantone® reference guides.
Copyright ©2026
 All print and electronic art remains the sole, copyrighted property of Pacific Neon Company and is not to be distributed, copied, e-mailed, or transferred in any way without prior written release from Pacific Neon Company.



SPECIFICATIONS

SCALE 3/8"=1'-0" | SIGN AREA 124.5 SF

RETURNS: PRE-PAINTED BLACK 5" DEEP ALUMINUM

FACES: #015 WHITE ACRYLIC FACES

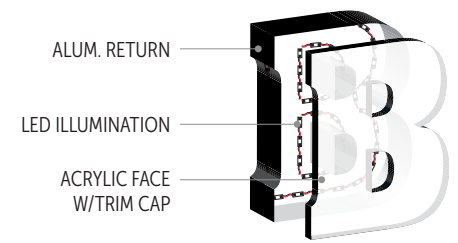
TRIM CAP: 1" BLACK

ILLUMINATION: WHITE LED ILLUMINATION.

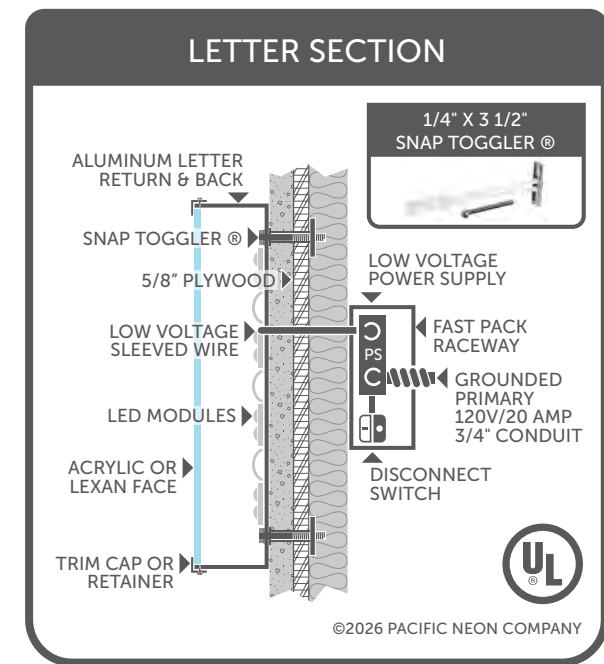
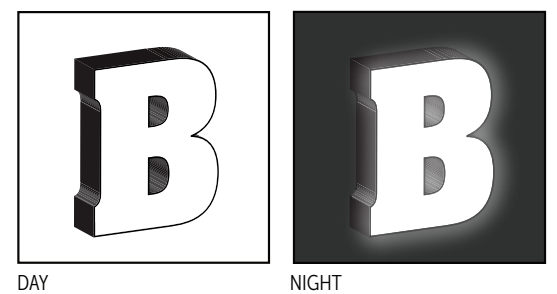
COLORS & MATERIALS

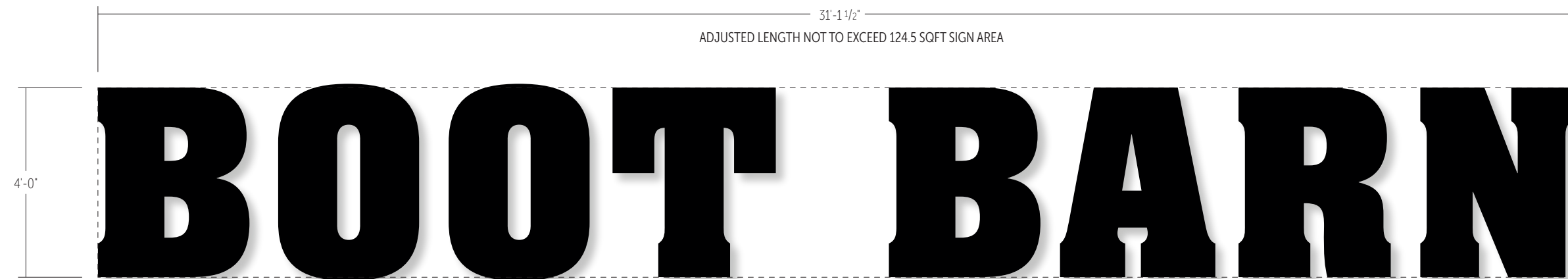
- PRE-FINISHED BLACK ALUMINUM AND TRIMCAP.
- #015 WHITE ACRYLIC.

EXPANDED LETTER DETAIL



DAY / NIGHT ILLUMINATION


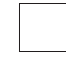





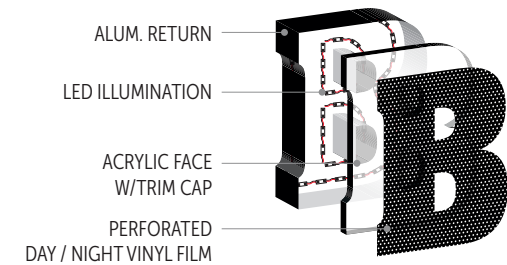
SPECIFICATIONS

- SCALE 3/8"=1'-0" | SIGN AREA 124.5 SF
- RETURNS: PRE-PAINTED BLACK 5" DEEP ALUMINUM
- FACES: #020 WHITE ACRYLIC FACES
- TRIM CAP: 1" BLACK
- VINYL FILM: PERFORATED BLACK VINYL FILM APPLIED FIRST SURFACE
- ILLUMINATION: WHITE LED ILLUMINATION.

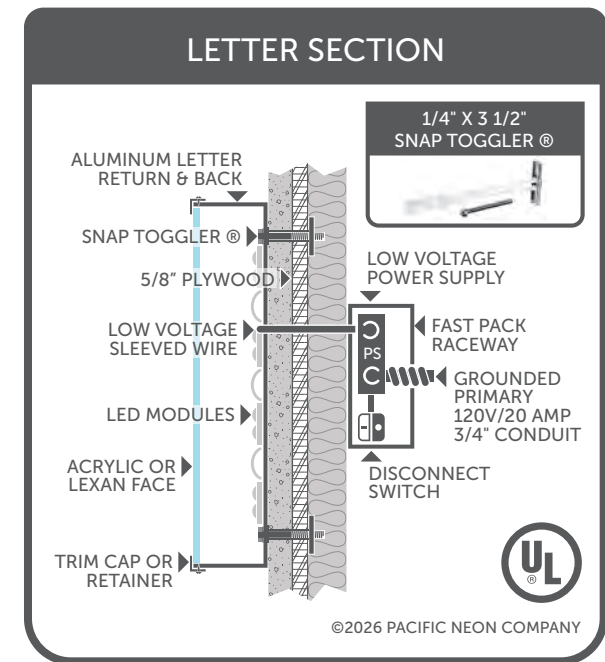
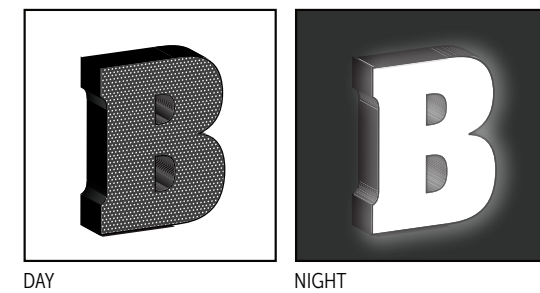
COLORS & MATERIALS

-  PRE-FINISHED ALUMINUM AND TRIMCAP GLOSS BLACK.
-  #020 WHITE ACRYLIC.
-  BLACK PERFORATED VINYL FILM

EXPANDED LETTER DETAIL



DAY / NIGHT ILLUMINATION



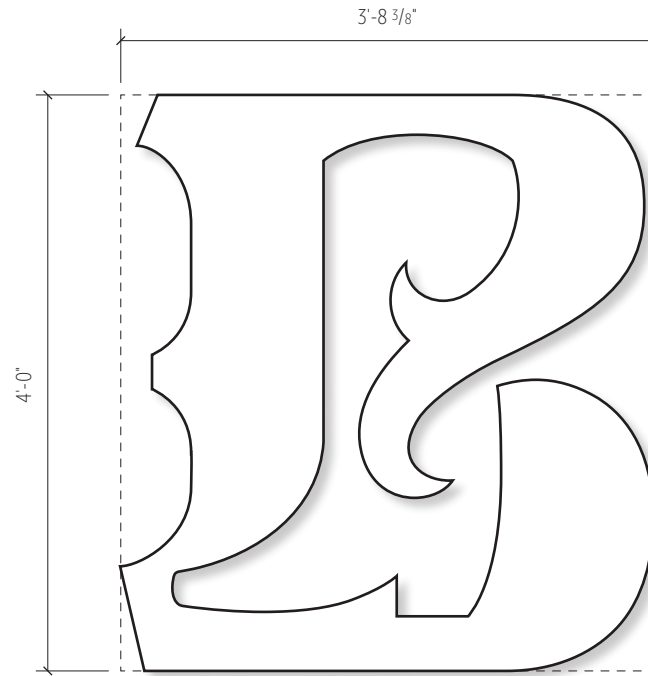
Ryan Drury
 (916) 213.8223
 ryan@pacificneon.com
 2939 Academy Way
 Sacramento, California 95815
 Tel: 916.927.0527 / 800.927.4762
 e-mail: sales@pacificneon.com
 www.pacificneon.com

Project No:
260050-01
 Project:
Boot Barn #1601 Westminster
 Address:
**20 Englar Road
 Westminster MD 21157**

Date:
01.15.2026
 Revision 1: **01.21.2026**
 Revision 2: **02.02.2026**
 Revision 3:

U.L. Listed
 Signs manufactured to U.L. specifications and bearing the U.L. Label(s) are intended for installation in accordance with the requirements of Article 600 of the National Electrical Code and/or other applicable local codes. This includes proper grounding and bonding of the sign.
Electrical Circuits
 The customer is required to provide primary dedicated electrical circuit(s) with a separate ground connection to the electrical panel. LED Electronics require a separate dedicated 120V complete circuit (without sharing the neutral wire). A common ground connection to the electrical panel is acceptable.

California Title 24 Compliant
Color Reference
 Actual color may vary from the on-screen representation or presentation material. To verify your color selections, please refer to a physical color chip, production sample, or Pantone® reference guides.
Copyright ©2026
 All print and electronic art remains the sole, copyrighted property of Pacific Neon Company and is not to be distributed, copied, e-mailed, or transferred in any way without prior written release from Pacific Neon Company.



SPECIFICATIONS

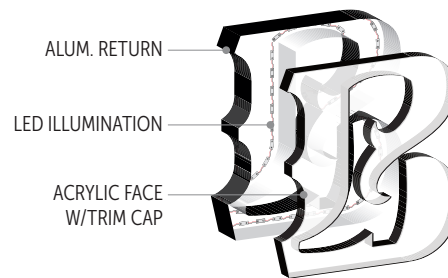
SCALE 3/4"=1'-0" | SIGN AREA 15 SF

- RETURNS: PRE-PAINTED BLACK 5" DEEP ALUMINUM
- FACES: #015 WHITE ACRYLIC FACES
- TRIM CAP: 1" BLACK
- ILLUMINATION: WHITE LED ILLUMINATION.

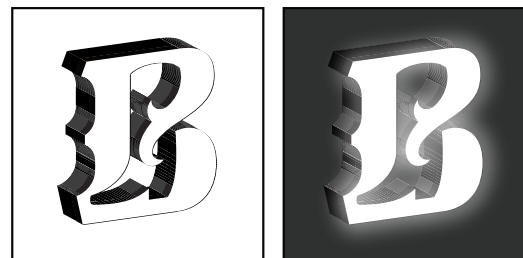
COLORS & MATERIALS

- PRE-FINISHED BLACK ALUMINUM AND TRIMCAP.
- #015 WHITE ACRYLIC.

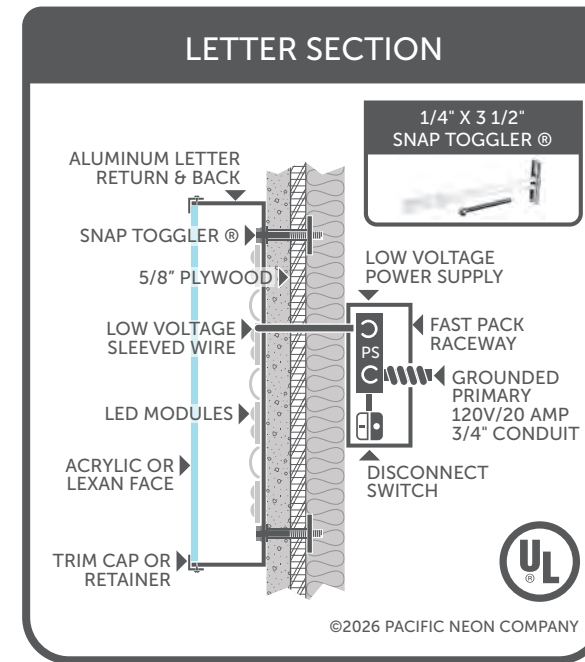
EXPANDED LETTER DETAIL



DAY / NIGHT ILLUMINATION



DAY NIGHT





EXISTING ELEVATION



PROPOSED TENANT PANEL | BOOT BARN TO BE ON BOTH SIDES OF THE SIGN



SPECIFICATIONS

SCALE 1/2"=1'-0" | SIGN AREA 24 SF

FACES: WHITE LEXAN

VINYL FILM: 3M 3630-22 BLACK VINYL FILM

COLORS & MATERIALS

 3M 3630-22 BLACK VINYL FILM.

 WHITE LEXAN.

U.L. Listed

Signs manufactured to U.L. specifications and bearing the U.L. Label(s) are intended for installation in accordance with the requirements of Article 600 of the National Electrical Code and/or other applicable local codes. This includes proper grounding and bonding of the sign.

Electrical Circuits

The customer is required to provide primary dedicated electrical circuit(s) with a separate ground connection to the electrical panel. LED Electronics require a separate dedicated 120V complete circuit (without sharing the neutral wire). A common ground connection to the electrical panel is acceptable.

California Title 24 Compliant

Color Reference

Actual color may vary from the on-screen representation or presentation material. To verify your color selections, please refer to a physical color chip, production sample, or Pantone® reference guides.

Copyright ©2026

All print and electronic art remains the sole, copyrighted property of Pacific Neon Company and is not to be distributed, copied, e-mailed, or transferred in any way without prior written release from Pacific Neon Company.