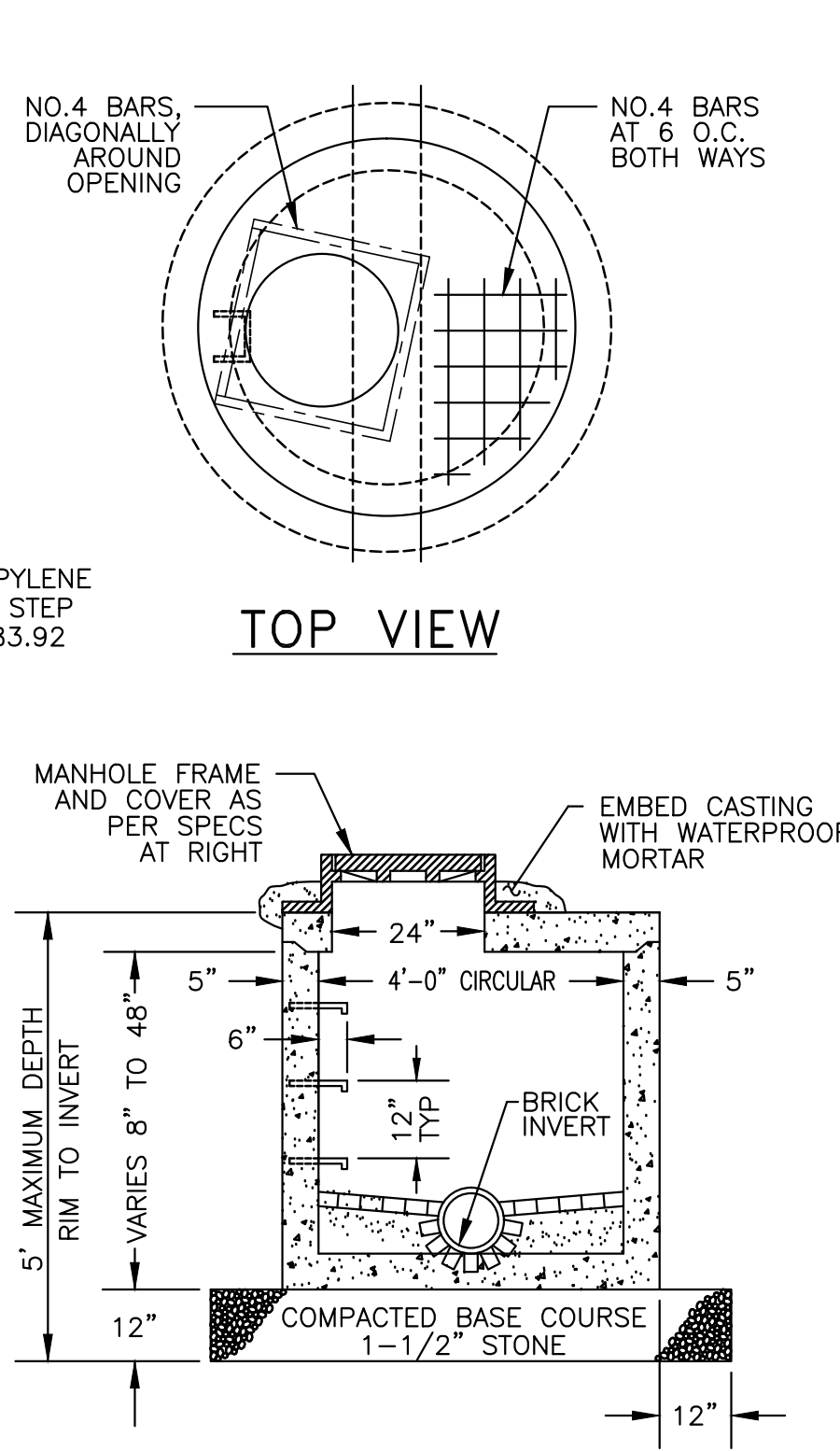
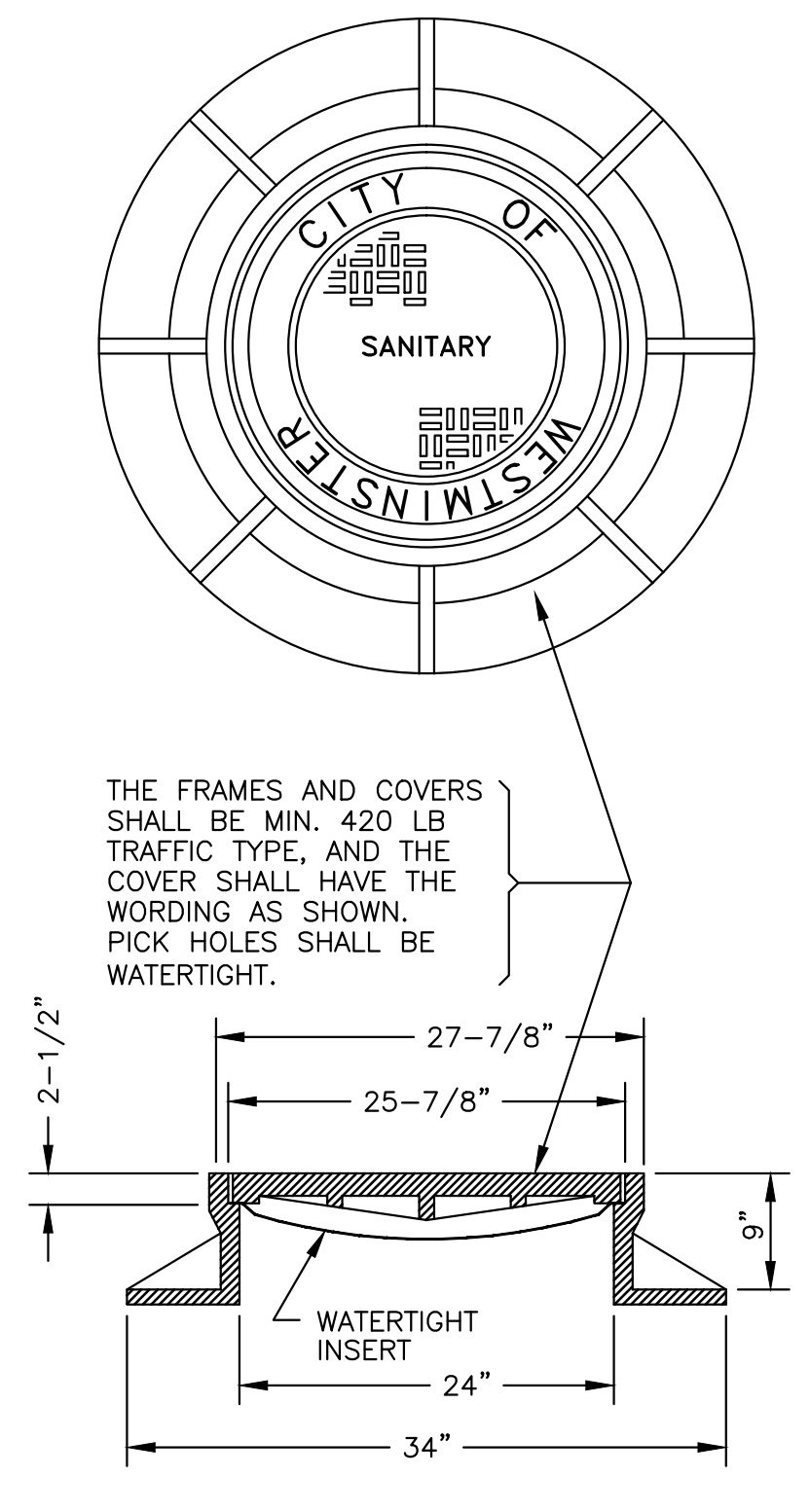


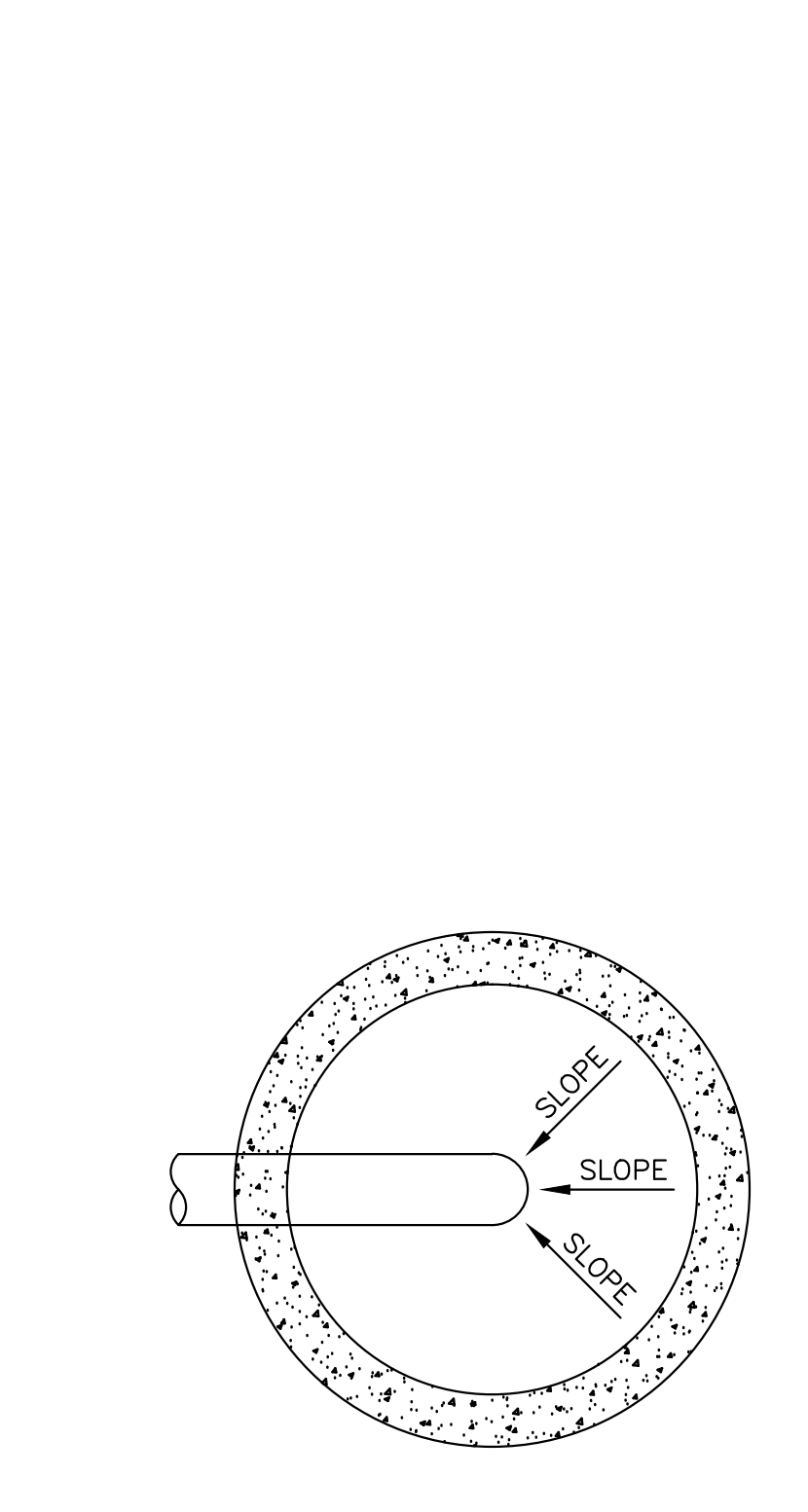
STANDARD MANHOLE TYPE 1



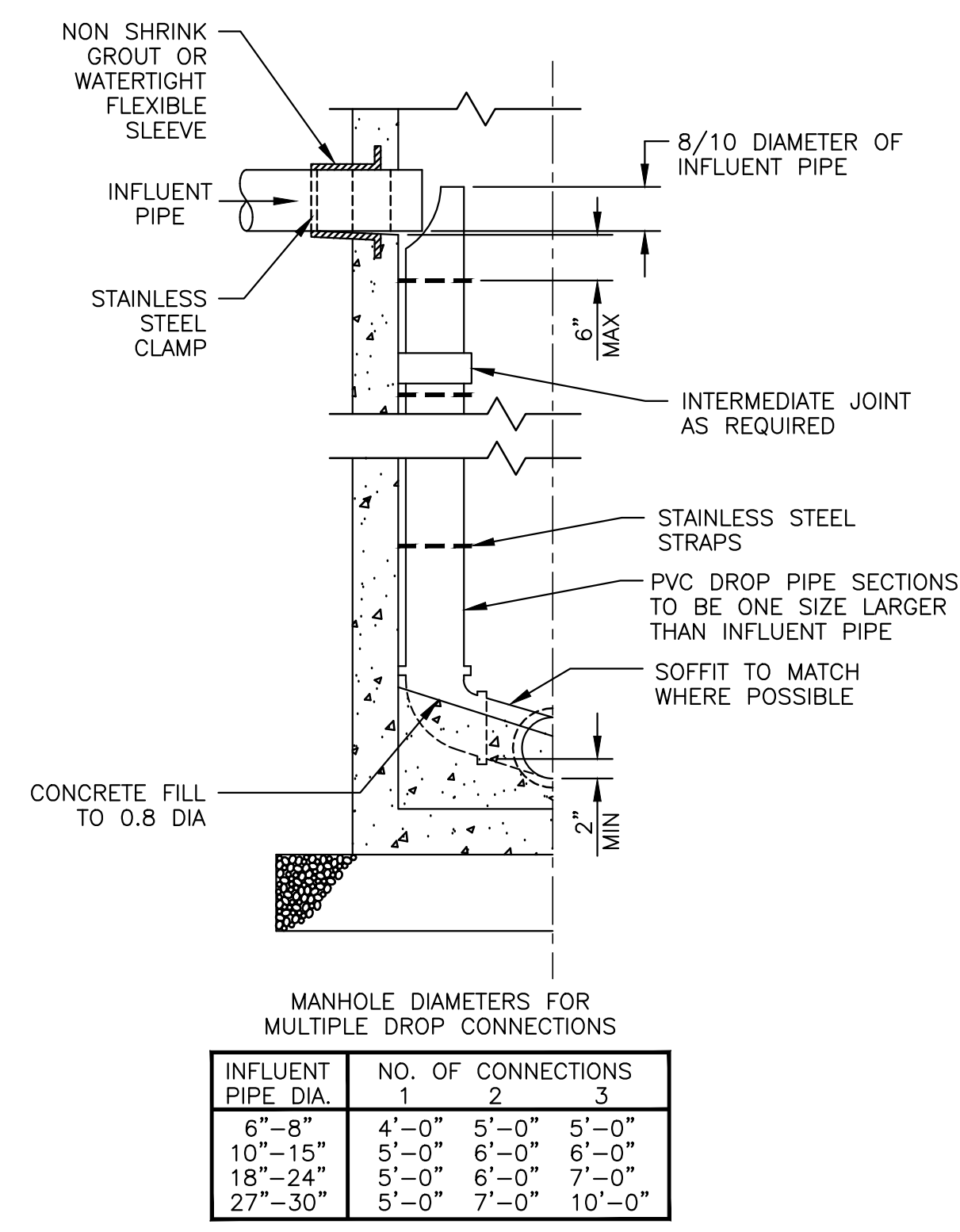
SHALLOW MANHOLE TYPE 2



MANHOLE FRAME & COVER



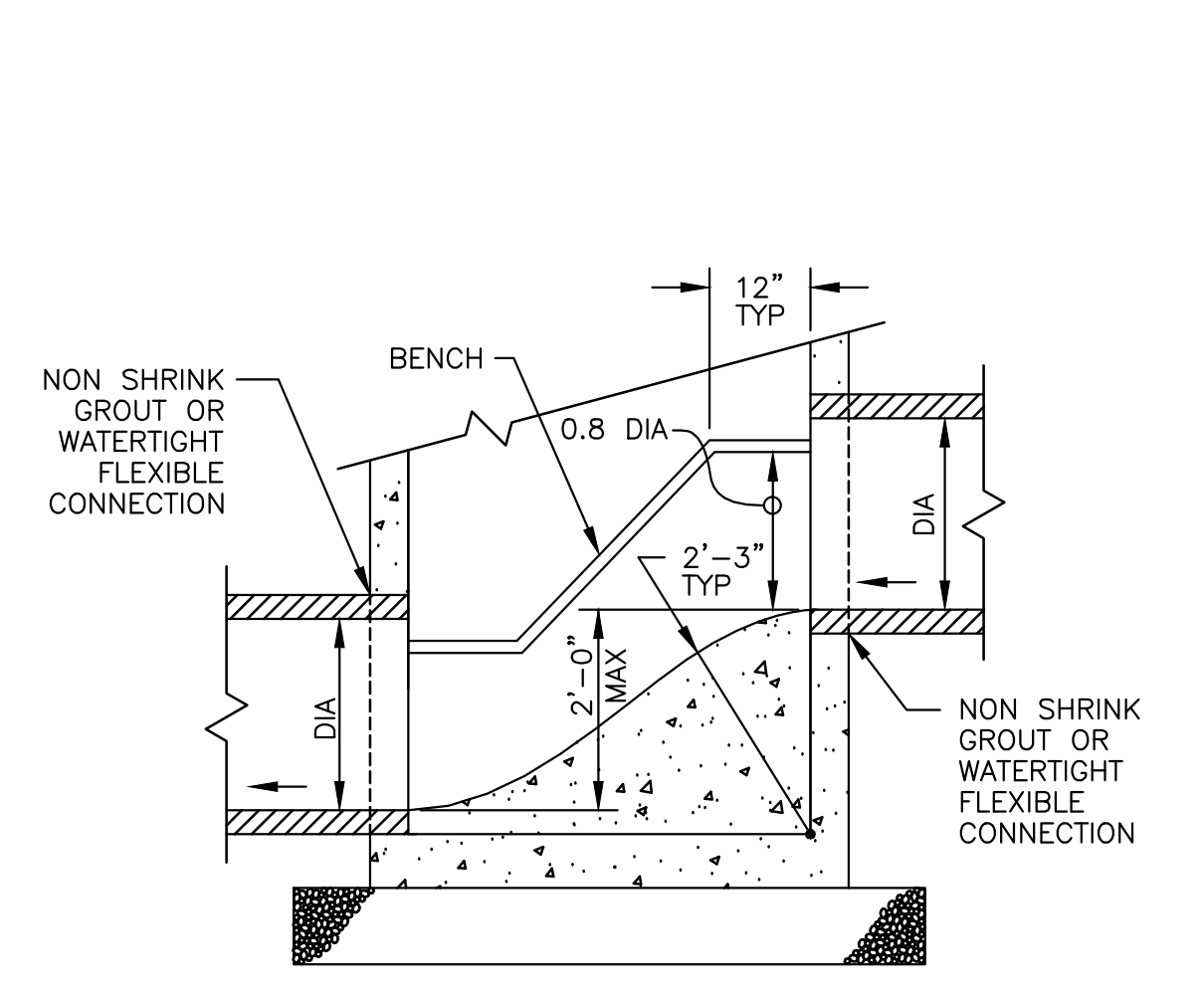
INVERT AT TERMINAL MANHOLE



INSIDE DROP CONNECTION

MANHOLE DIAMETERS FOR MULTIPLE DROP CONNECTIONS

INFLUENT PIPE DIA.	NO. OF CONNECTIONS	1	2	3
6"-8"	4'-0"	5'-0"	5'-0"	
10"-15"	5'-0"	6'-0"	6'-0"	
18"-24"	5'-0"	6'-0"	7'-0"	
27"-30"	5'-0"	7'-0"	10'-0"	

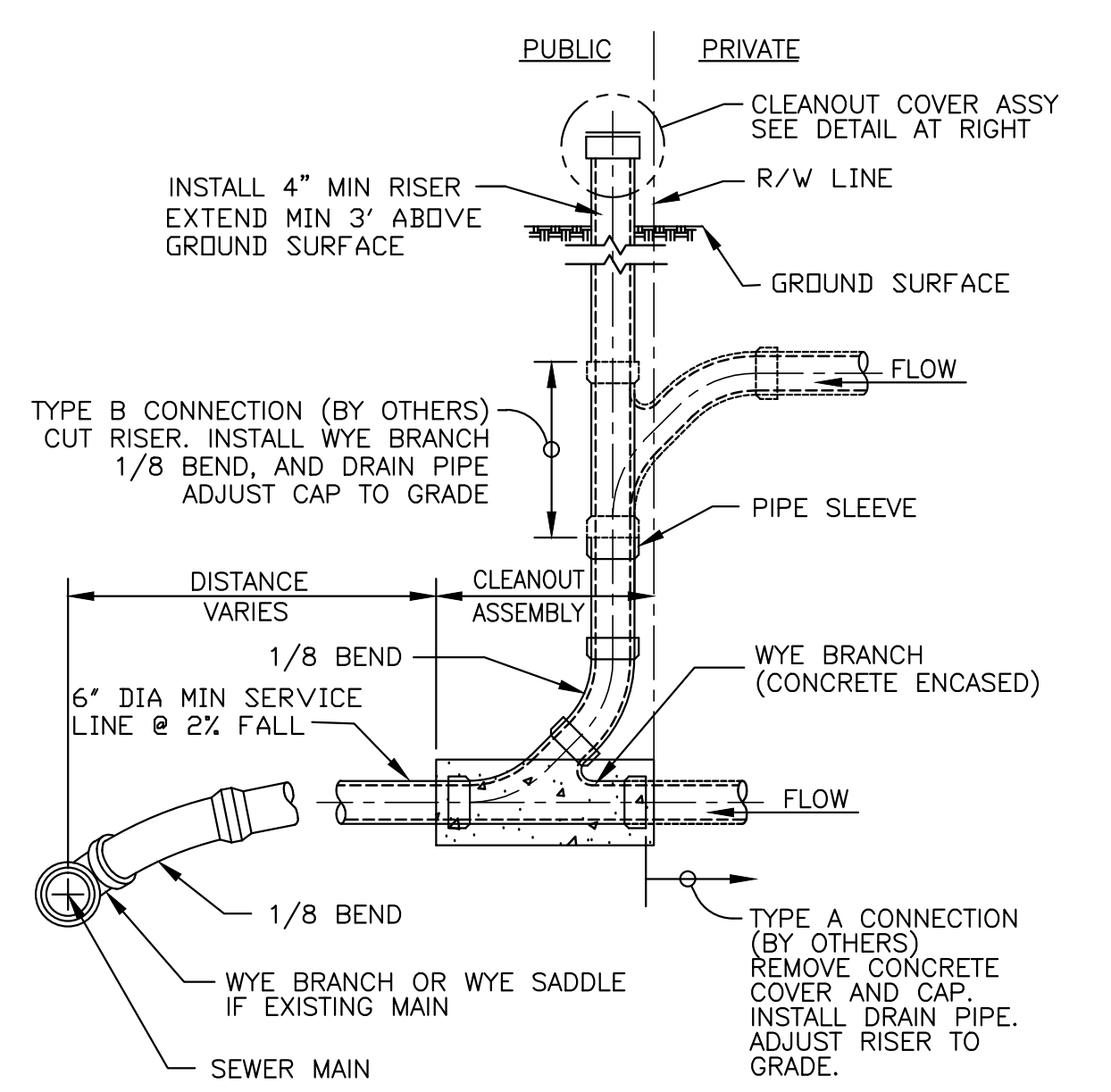


MANHOLE CHUTE

MANHOLE NOTES:

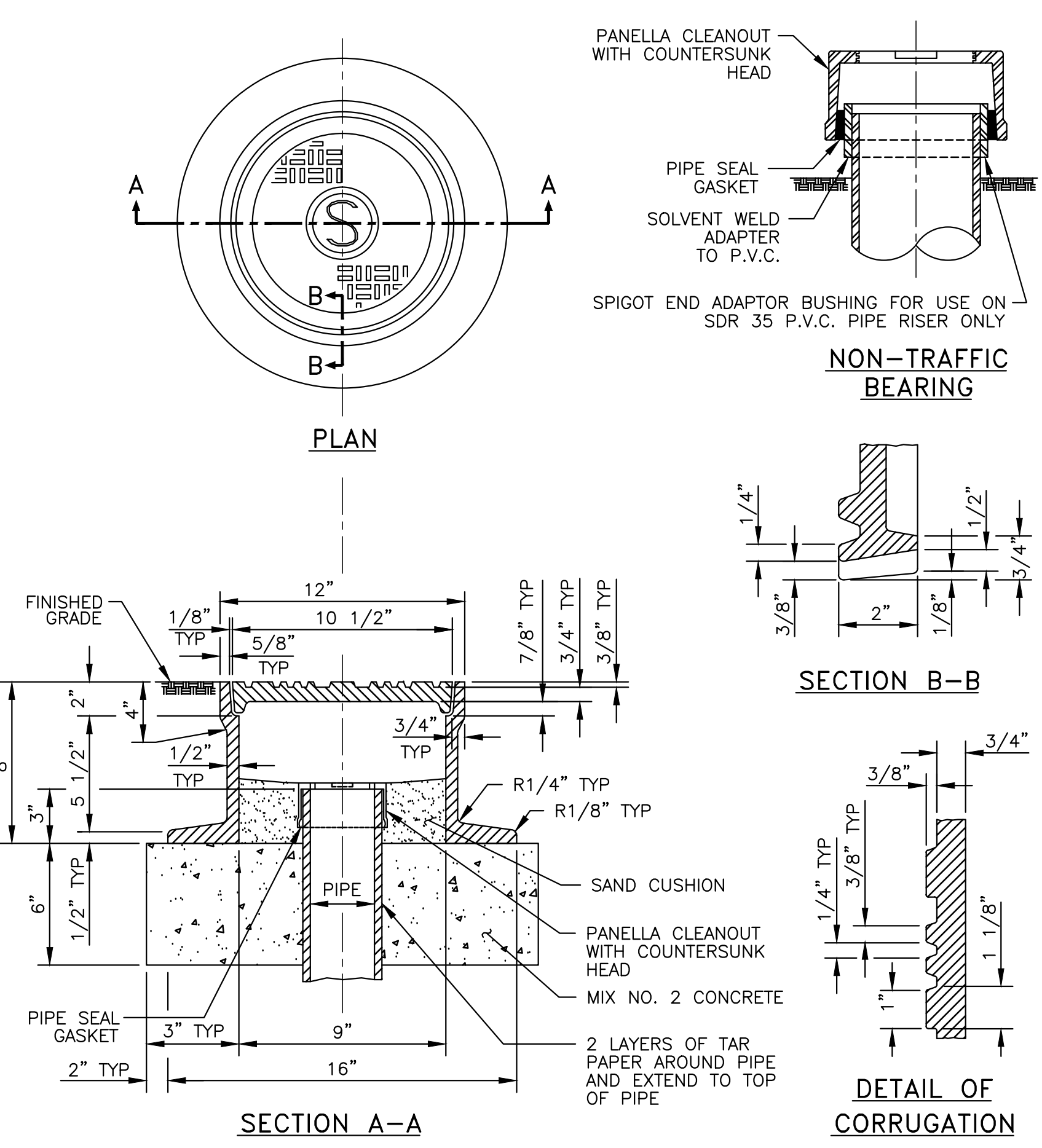
1. PRECAST CONCRETE MANHOLE SECTIONS SHALL BE MANUFACTURED IN ACCORDANCE WITH A.S.T.M. DESIGNATION C 478 LATEST REQUIREMENTS.
2. ALL INVERTS OF MANHOLES TO BE BRICKED TO GRADE, SMOOTH AND EVEN FINISH.
3. ALL OPENINGS FOR PIPES IN PRECAST MANHOLES WITHOUT FLEXIBLE CONNECTIONS SHALL BE CAST, WITH KEY, FOR GROUTING OF PIPES.

PRECAST CONCRETE MANHOLES

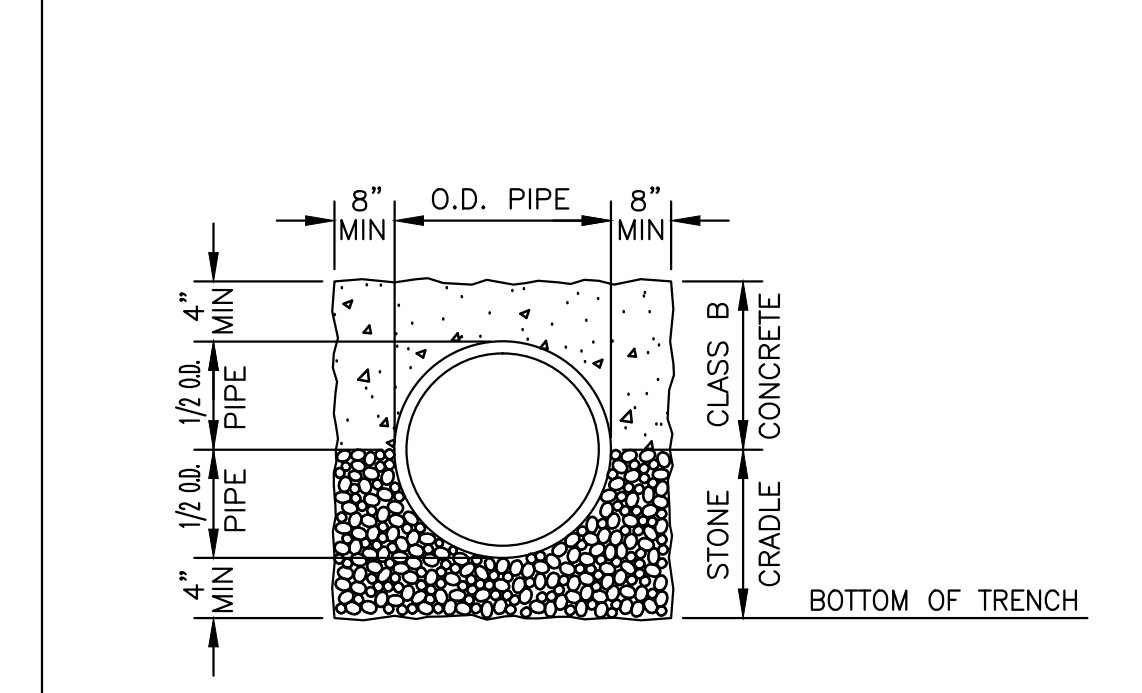


STANDARD CONNECTION

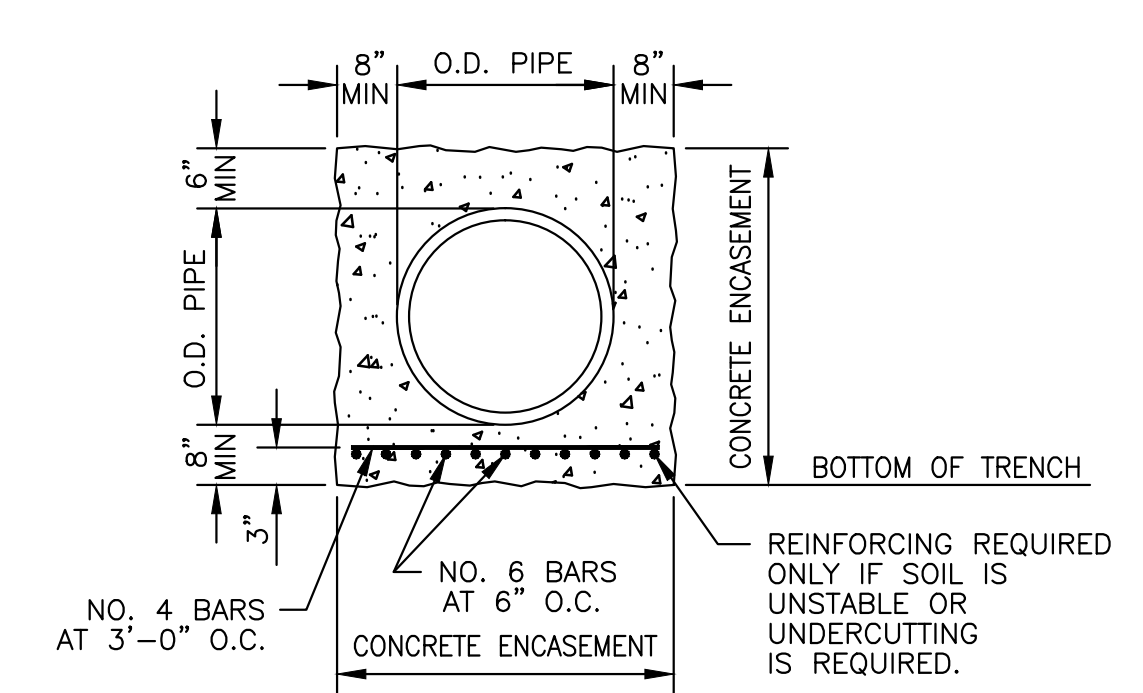
- NOTES:
1. MATERIAL TO BE SDR 35 P.V.C. OR D.I.P. ALL JOINTS TO BE PUSH ON RUBBER GASKET JOINTS.
 2. CLEANOUT STUB TO BE LEFT 3' ABOVE SURFACE FOR UNIMPROVED LOTS AND PROVIDED WITH A PANNELLA CLEANOUT CAP.
 3. FOR CLEANOUTS SUBJECT TO AIR TESTS, CONTRACTOR TO PLACE WEIGHT ON RISER OR RESTRAIN RISER TO Y-BRANCH.
 4. THE INSTALLATION OF THE STANDARD CLEANOUTS SHALL CONFORM TO BOTH THE CITY OF WESTMINSTER AND THE STATE OF MARYLAND SPECIFICATIONS.



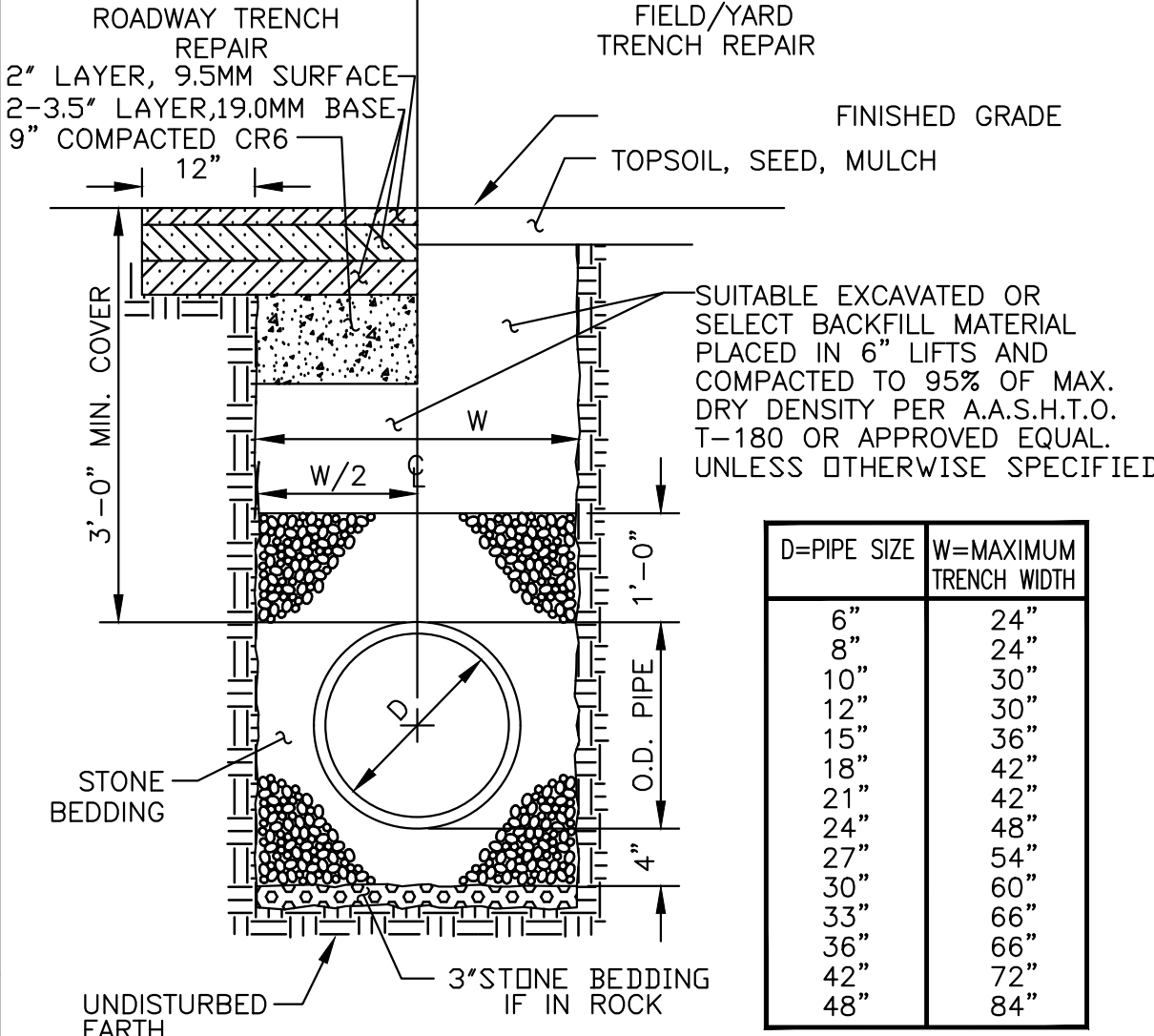
TRAFFIC BEARING CLEANOUT COVER ASSEMBLY



CONCRETE ARCH PROTECTION



CONCRETE ENCASEMENT

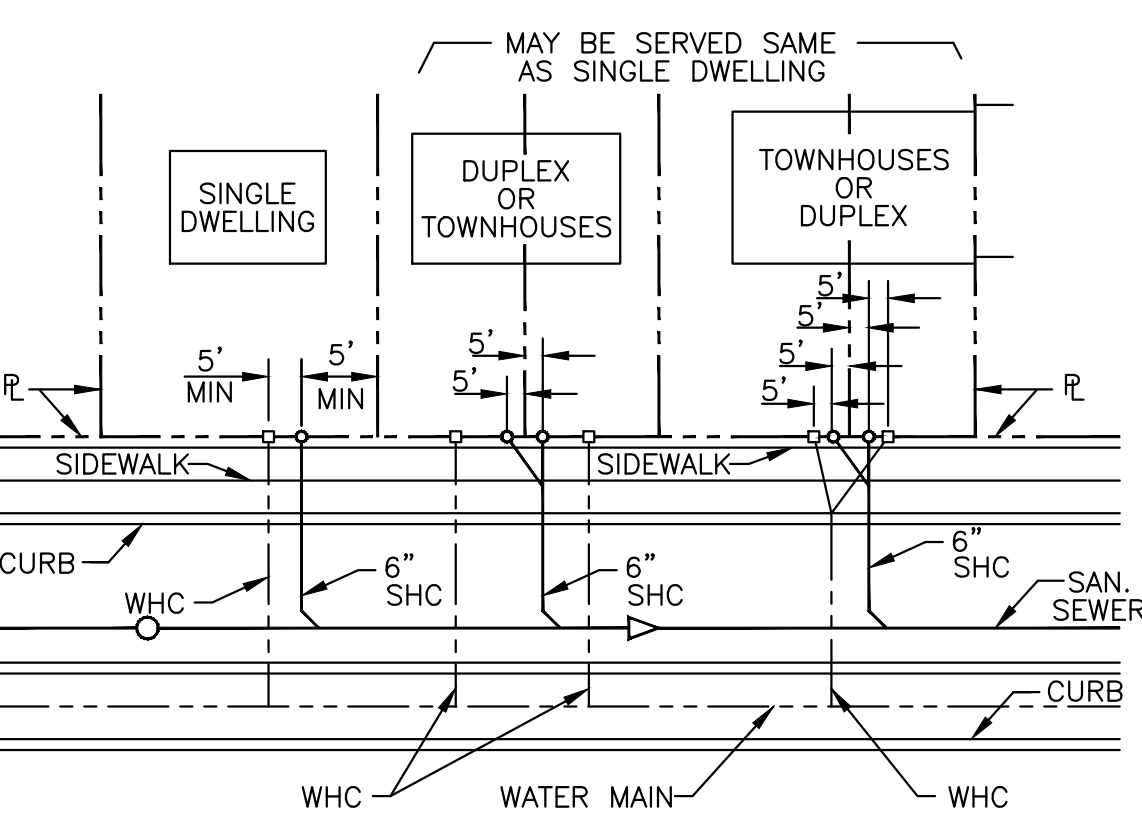


TRENCH DETAIL

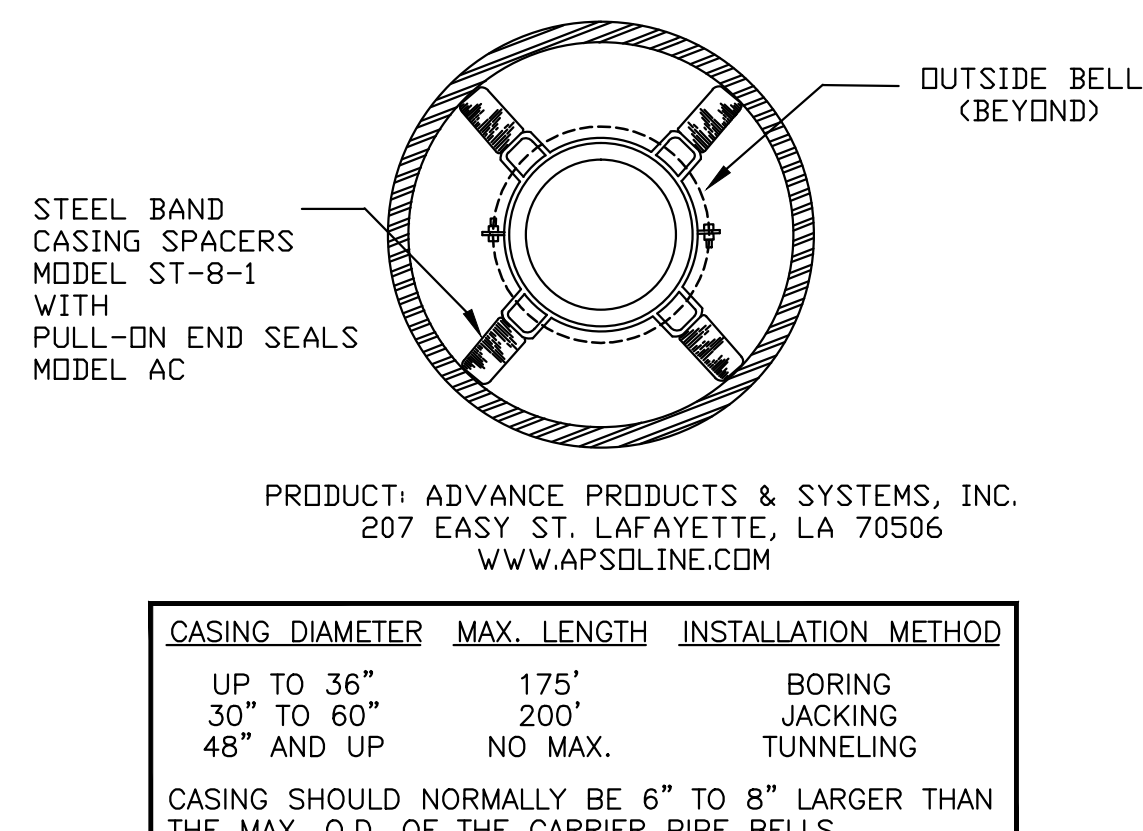
D=PIPE SIZE	W=MAXIMUM TRENCH WIDTH
6"	24"
8"	24"
10"	30"
12"	30"
15"	36"
18"	42"
21"	42"
24"	48"
27"	54"
30"	60"
33"	66"
36"	72"
42"	72"
48"	84"

GENERAL NOTES:

1. ALL CONCRETE CONSTRUCTION SHOWN ON THESE STANDARD DETAILS SHALL USE 3000 P.S.I., SHA MIX NO. 2 CONCRETE UNLESS OTHERWISE SPECIFIED ON THESE PLANS.
2. THE MINIMUM ACCEPTABLE SIZE FOR SEWER SERVICE PIPE SHALL BE 6" DIAMETER, CONSTRUCTED ON A 2% RISE FROM THE MAIN. LARGER SIZES SHALL BE INSTALLED WHERE SPECIFICALLY CALLED OUT IN THE PLANS.
3. SEWER MAINS AND APPURTENANCES ARE SUBJECT TO INSPECTION AND TESTING IN ACCORDANCE WITH THE STANDARD PROCEDURES OF THE CITY OF WESTMINSTER AND THEIR INSPECTORS IN THE FIELD.
4. MINIMUM VERTICAL CLEARANCE AT CROSSINGS BETWEEN SEWER LINES WITH OTHER UTILITIES SHALL BE 12". WATER SHALL CROSS ABOVE SANITARY SEWER. MINIMUM LATERAL CLEARANCE FROM UTILITY POLES, INLETS, CURB AND GUTTER, MANHOLES, AND OTHER MISCELLANEOUS STRUCTURES SHALL BE 36". ALL CLEARANCES SHALL BE MEASURED FROM OUTSIDE TO OUTSIDE EDGES.



TYPICAL METHODS FOR SERVICE



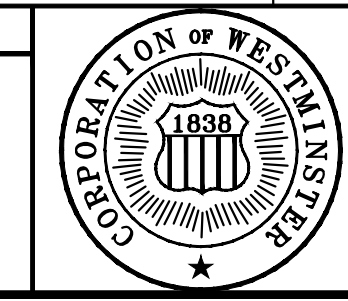
SLEEVE & CARRIER PIPE INSTALLATION

CASING DIAMETER	MAX. LENGTH	INSTALLATION METHOD
UP TO 36"	175'	BORING
30" TO 60"	200'	JACKING
48" AND UP	NO MAX.	TUNNELING

CASING SHOULD NORMALLY BE 6" TO 8" LARGER THAN THE MAX. O.D. OF THE CARRIER PIPE BELLS.

SEWER HOUSE CONNECTION (SHC)

DATE	REVISION	BY
3/13	REVISED NOTES, SHA MIX, PAVEMENT THICKNESS, STEEL BAND	R.A.P.



STANDARD SEWER CONSTRUCTION DETAILS

SHEET: _____ OF: _____
DATE: _____
SCALE: HORIZ. NONE VERT. _____